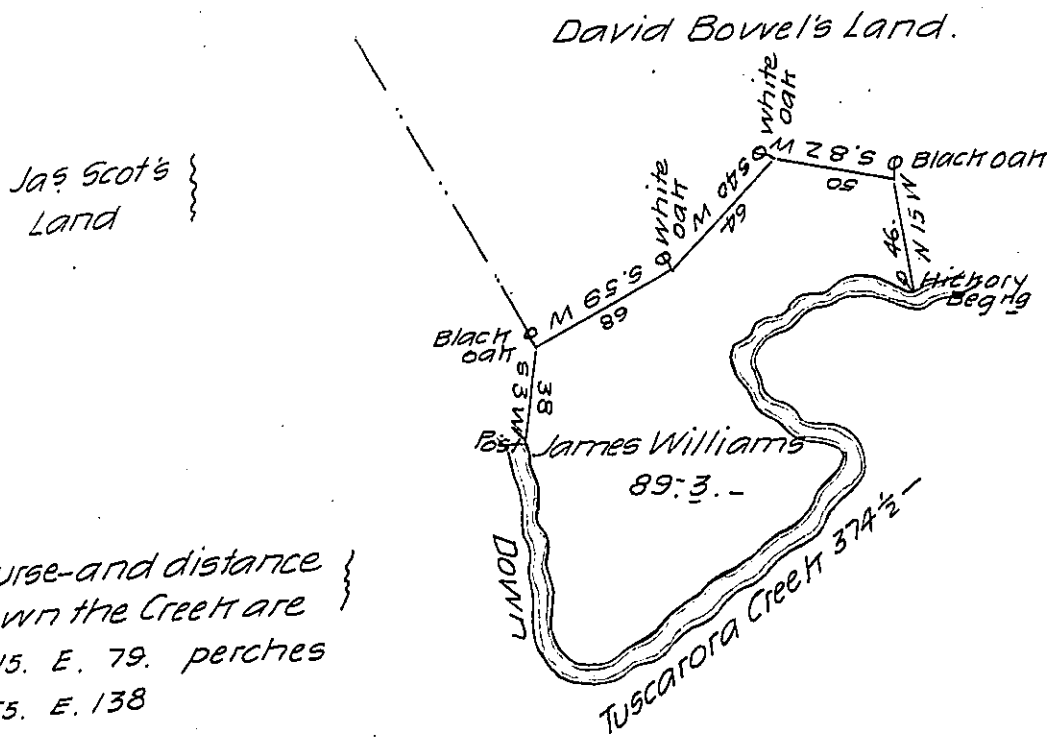


FORM NO 1.



Course-and distance
down the Creek are
S. 15. E. 79. perches
N. 55. E. 138
N. 50 W. 63
N. 49. E 67 1/2
S. 83. E 27
In all 374 1/2 prs.

The Draught of a Tract of Land called ——— situate on Tuscarora
Creek, Cumberland County, containing eighty nine acres and sixty
perches with the usual allowance of six acres Pr. Cent. for Roads.
Surveyed the 6th day of May Anno Domini 1768, in pursuance of a
warrant from the Honble the Proprietaries to James Williams bear-
ing date at Philad^a the 6th day of February 1755

P. — Wm. Maclay —

To John Lukens Esqr. S. G. of the
Province of Pennsylvania

IN TESTIMONY that the above is a copy of the original remaining on file in
the Department of Internal Affairs of Pennsylvania, made
conformably to an Act of Assembly approved the 16th day of
February, 1833, I have hereunto set my Hand and caused
the Seal of said Department to be affixed at Harrisburg,
this fourteenth day of June 1907

Henry Houck
Secretary of Internal Affairs.